

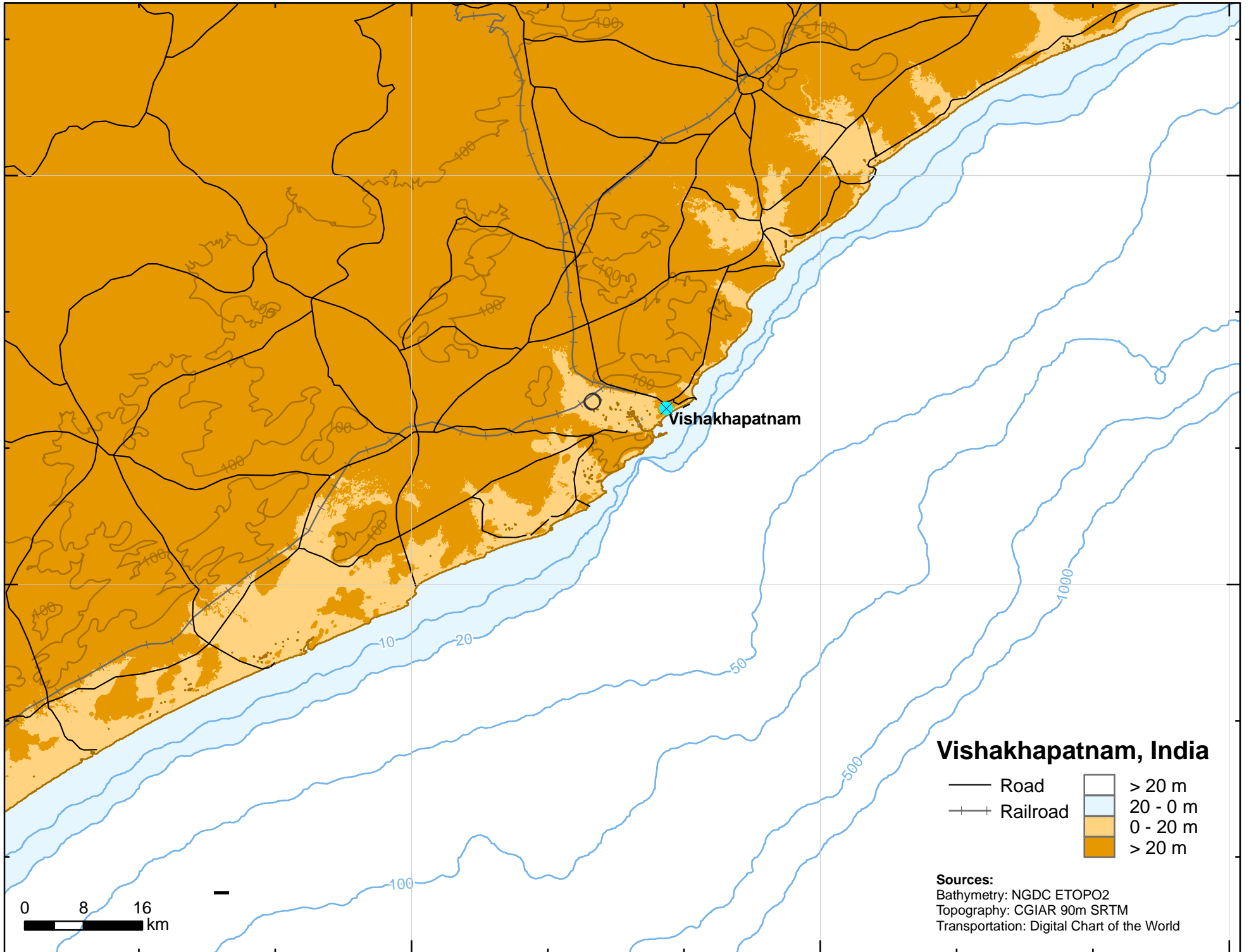
83°0'E

83°30'E

84°0'E

18°0'N

17°30'N



Vishakhapatnam

Vishakhapatnam, India

- Road
 - + + Railroad
- | | |
|--|----------|
| | > 20 m |
| | 20 - 0 m |
| | 0 - 20 m |
| | > 20 m |

Sources:
Bathymetry: NGDC ETOPO2
Topography: CGIAR 90m SRTM
Transportation: Digital Chart of the World